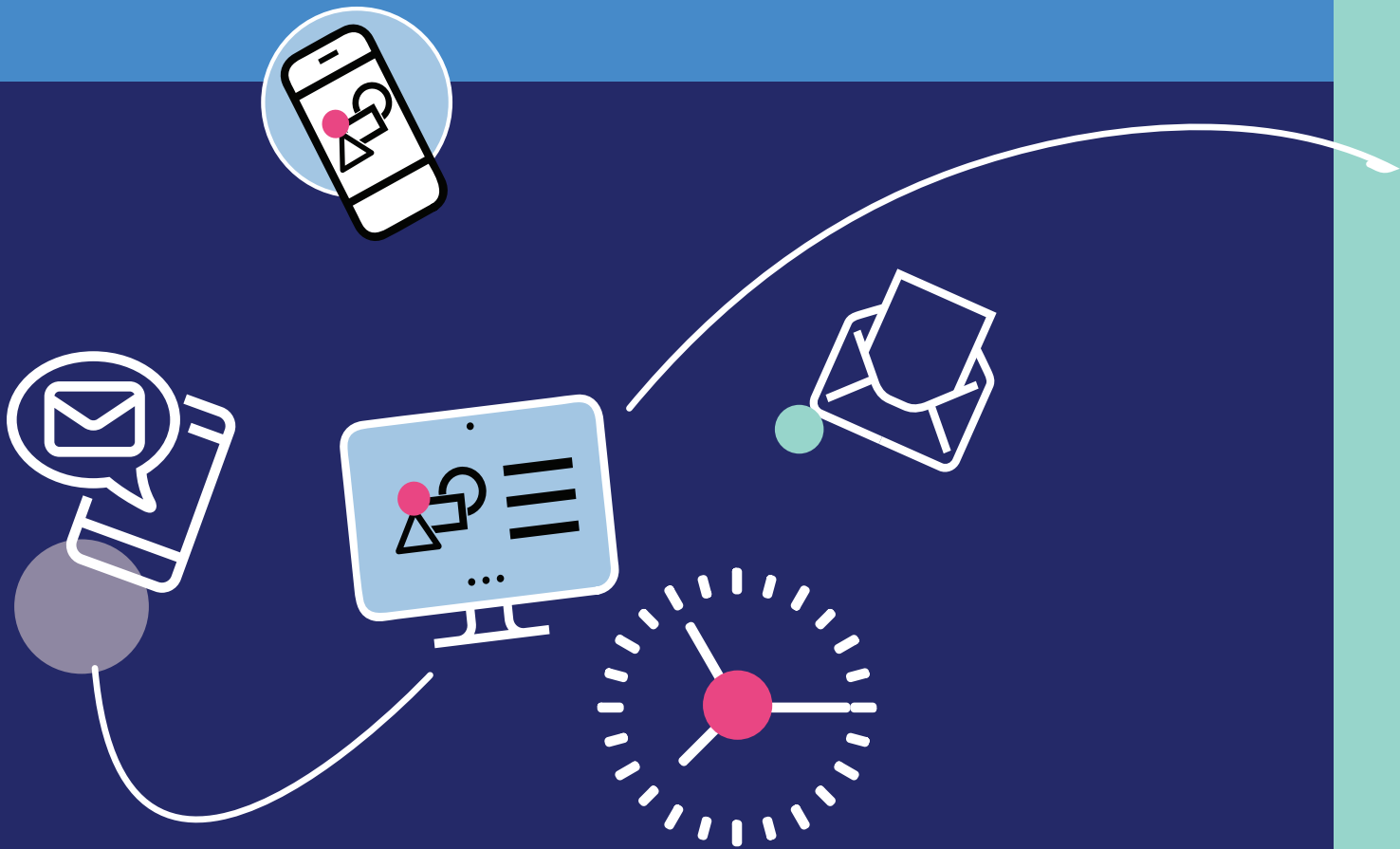




# digimail™

Your online solution to  
Multi Channel Customer  
Communication



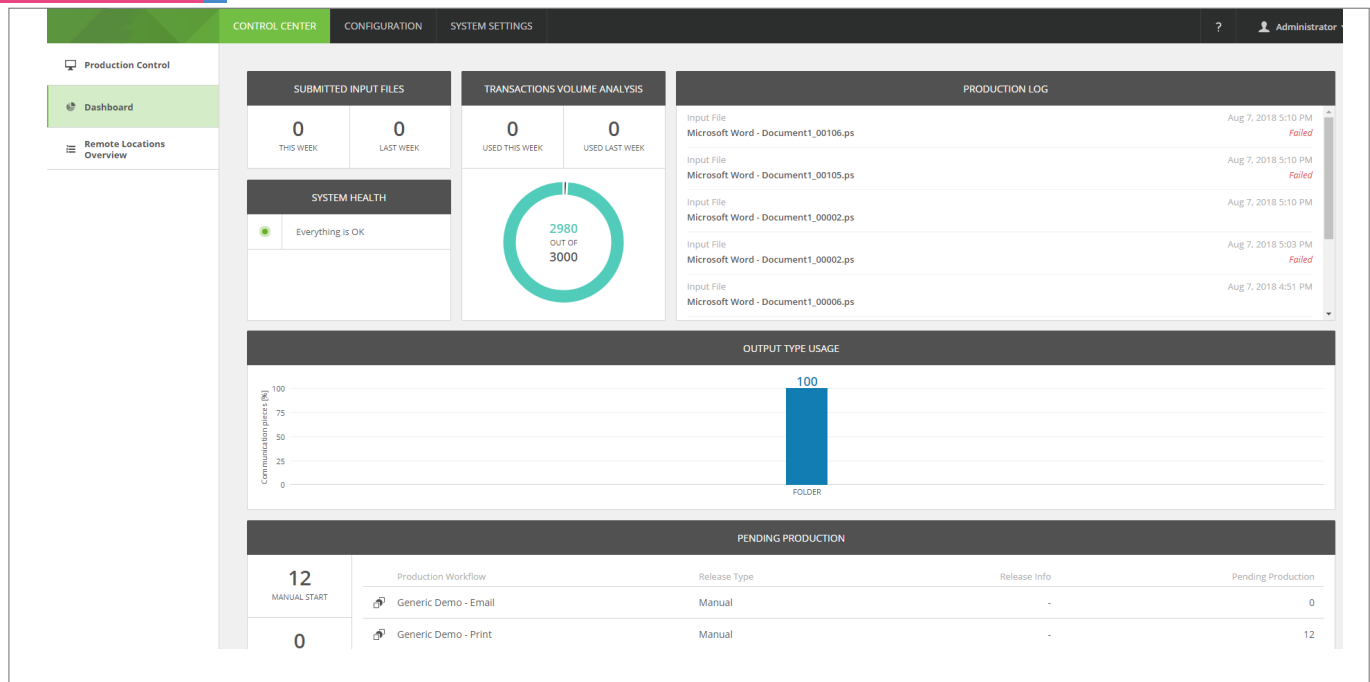
epikon

CUSTOMER COMMUNICATIONS



# digimail™

The power and convenience of sending customer communications whether you're in the office or working from home.



Above: Easily accessible client interface dashboard allows users to send, track and reconcile all communications submitted.

**Digimail** allows you to access and use content to create a better experience for your customers and turn your communication into multiple conversations.

Adding personalised marketing messages, overlays or enclosures to a document has never been so easy.

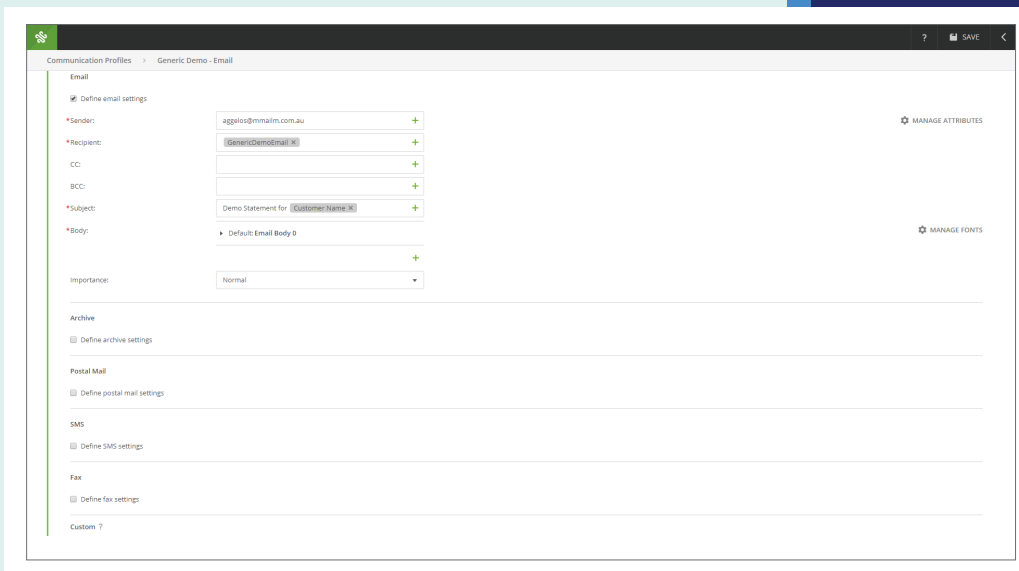
Digimail helps you maximise the impact of each customer communication piece and improve customer satisfaction, eliminating the cost of printing and storing pre-printed documents.

## Capability Highlights

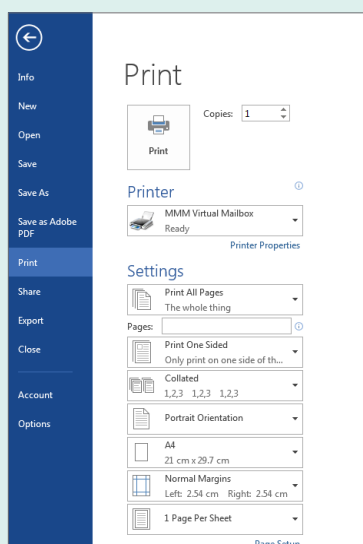
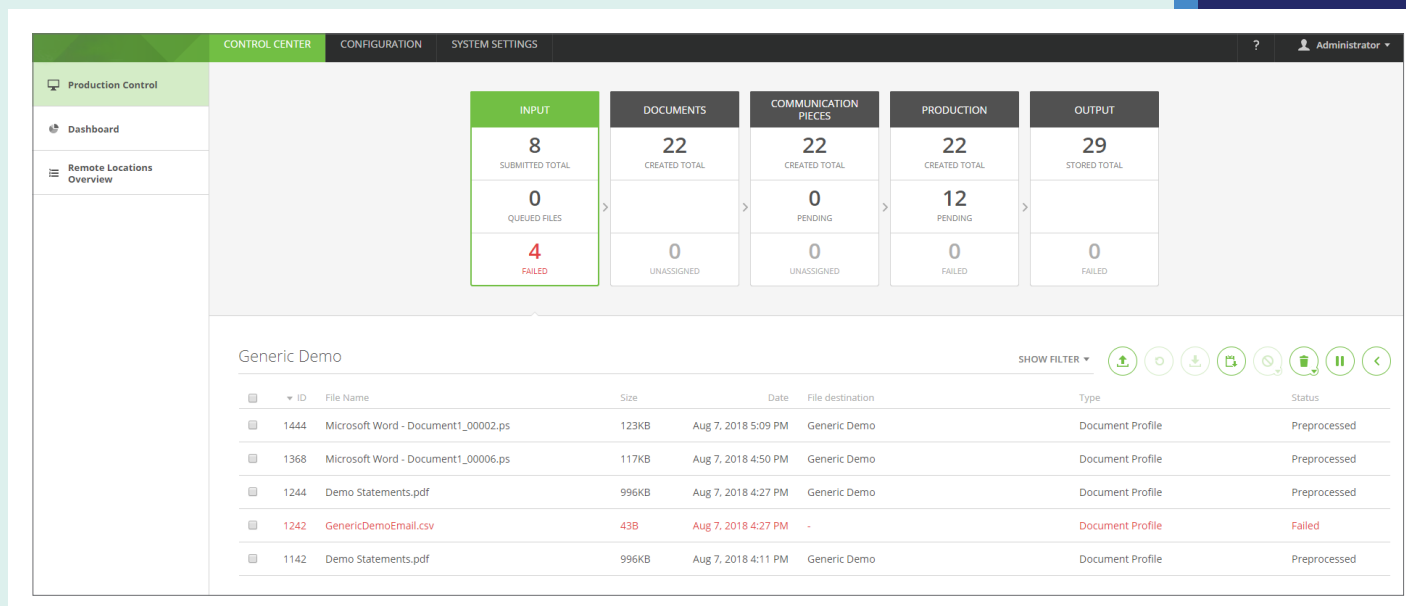
- High performance – up to 10,000 documents per minute
- Easy to use and configure
- User-friendly Graphical User Interface (GUI)
- End-to-end process management automation
- Supports industry standard data input and output formats
- Allows centralised document control
- Applies document specific branding and customisation
- Document delivery via recipients preferred channel – web, email, mail and more
- Postal savings with DPID barcoding
- Allows document changes and enhancements in real time without IT involvement
- Leverages IT investment through ERP/CRM business process interfaces

- Reduce manual processing
- Improve employee productivity
- Mitigate the risk of human error
- Save time and money
- Improve reporting & reconciliation

Right: Ability to configure and send digital communications such as email and SMS

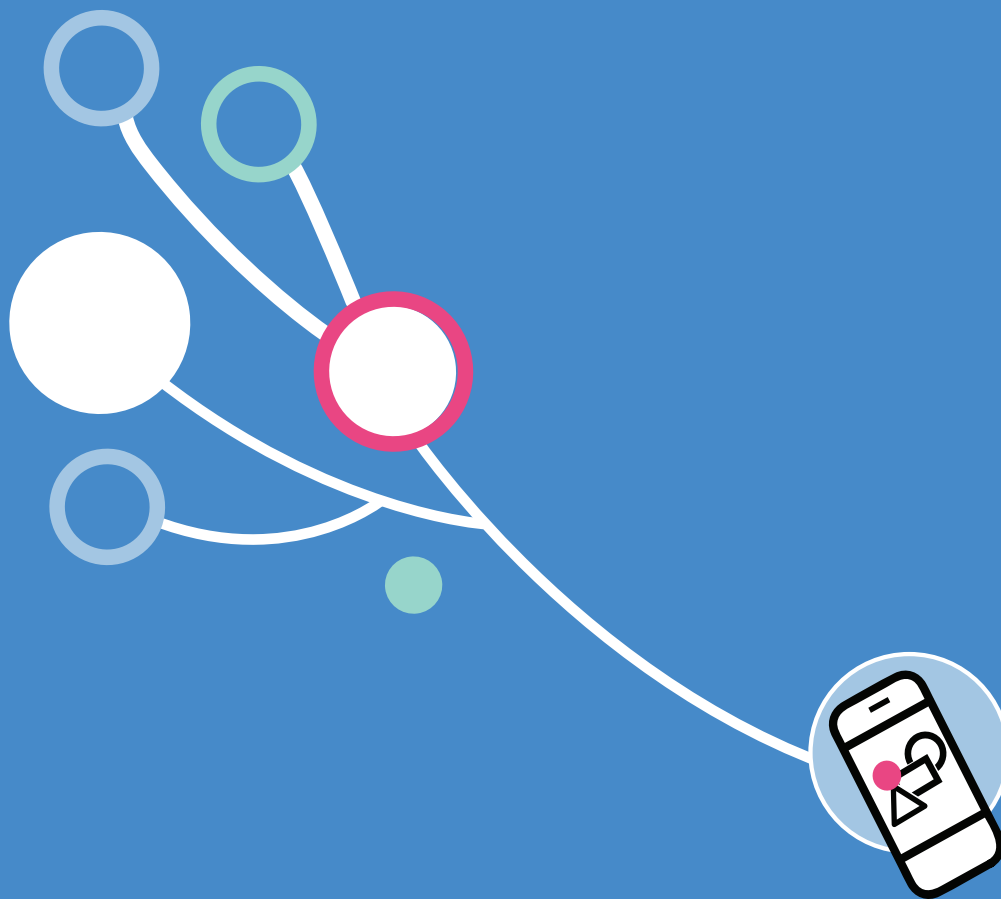


Below: Production control view enables users and administrators to track the status of their inputs and processes and action subsequent requirements.



Left: Allows you to use and configure your on-premise desktop printer to act as a "virtual printer" for submitting files and documents.





epikon

CUSTOMER COMMUNICATIONS

t 03 9843 0800  
w epikon.com.au  
e epikon@epikon.com.au

68 Lexton Road,  
Box Hill North VIC 3129